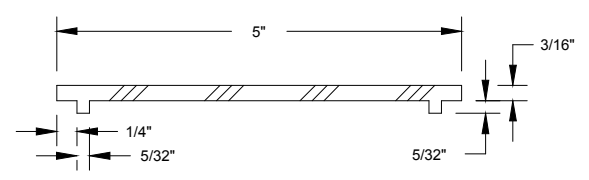
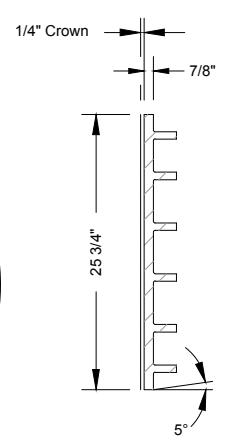
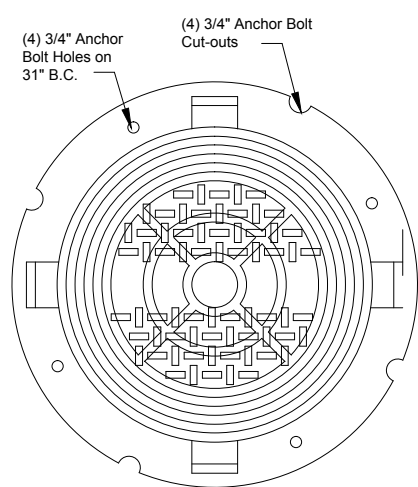


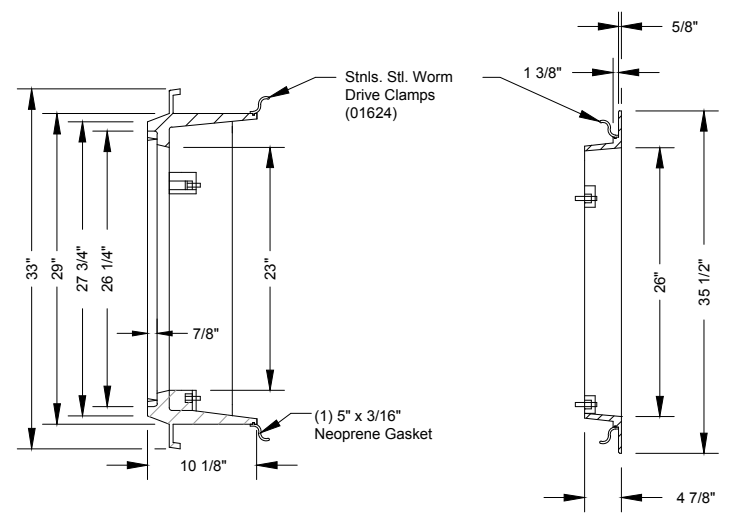
PLAN VIEW



SECTION OF EXTRUDED NEOPRENE GASKET



COMP. #S LID 1733-078 207 Lbs
or
LID 1733-0716 109 Lbs



FR. 1955-0004
272 Lbs

FR. 1955-0003
160 Lbs

MATERIAL: Cast Gray Iron ASTM A-48, Class 358
FINISH: Black Asphalt Emulsion
WEIGHT: 639#/Unit

CITY OF WATFORD CITY, NORTH DAKOTA PUBLIC WORKS DEPARTMENT	
FLOATING MANHOLE CASTING DETAIL (SHEET 2 OF 2)	
APPROVED FOR PUBLICATION	DWG. NO.
_____ City Engineer	_____ Date
1206-4	