

NOTE NO.1 - TYPE 36" INLET CASTING SHALL BE AS DEFINED IN SECTION 1205-2.6.
 TYPE 72" INLET CASTING SHALL BE AS DEFINED IN SECTION 1205-2.6.

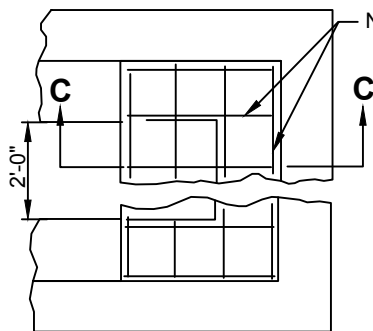
NOTE NO.2 - ALLOWANCE FOR ADJUSTMENT SHALL BE 1 1/2" MINIMUM TO 3" MAXIMUM. SEE STANDARD DETAIL NO.1206-1.

NOTE NO.3 - WHEN THE O.D. OF THE PIPE EXCEEDS THE DIMENSIONS SHOWN FOR TYPE 'B' OR TYPE 'C' INLETS, THE INLET WALLS SHALL BE POURED FLUSH WITH THE OUTSIDE WALLS OF THE PIPE. THE ROOF SLAB SHALL BE CONSTRUCTED AS DETAILED IN SECTION C-C BELOW.

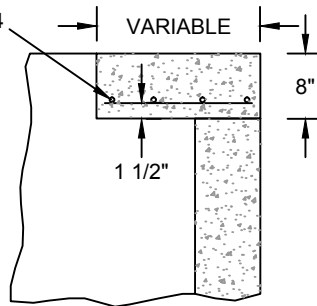
NOTE NO.4 - ALL BARS SHALL BE NO.5 DEFORMED REINFORCING BARS SPACED 6" CENTER TO CENTER BOTH WAYS.

NOTE NO.5 - BOLTS FOR CASTING SHALL BE TEMPER FINISH, DOUBLE HEAT TREATED-1038 S.A.E. GRADE 5, WITH CAD-DICHROMATE PLATING.

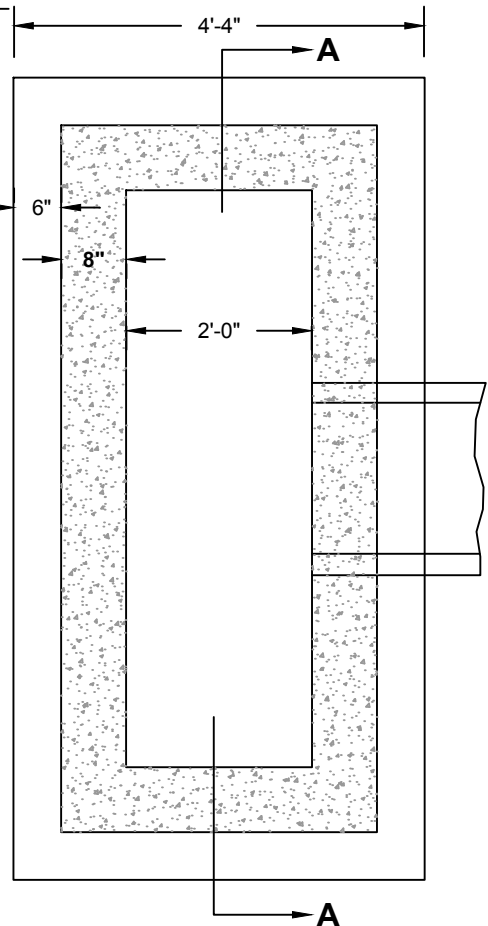
NOTE NO.6 - STEPS SHALL BE PLACED IN SANITARY SEWER, STORM SEWER AND AIR RELEASE MANHOLES AND INLETS AS SPECIFIED. THE MANHOLE STEPS SHALL BE DELTA SUREFOOT OR APPROVED EQUAL. STEPS SHALL BE SPACED 16" ON CENTER.



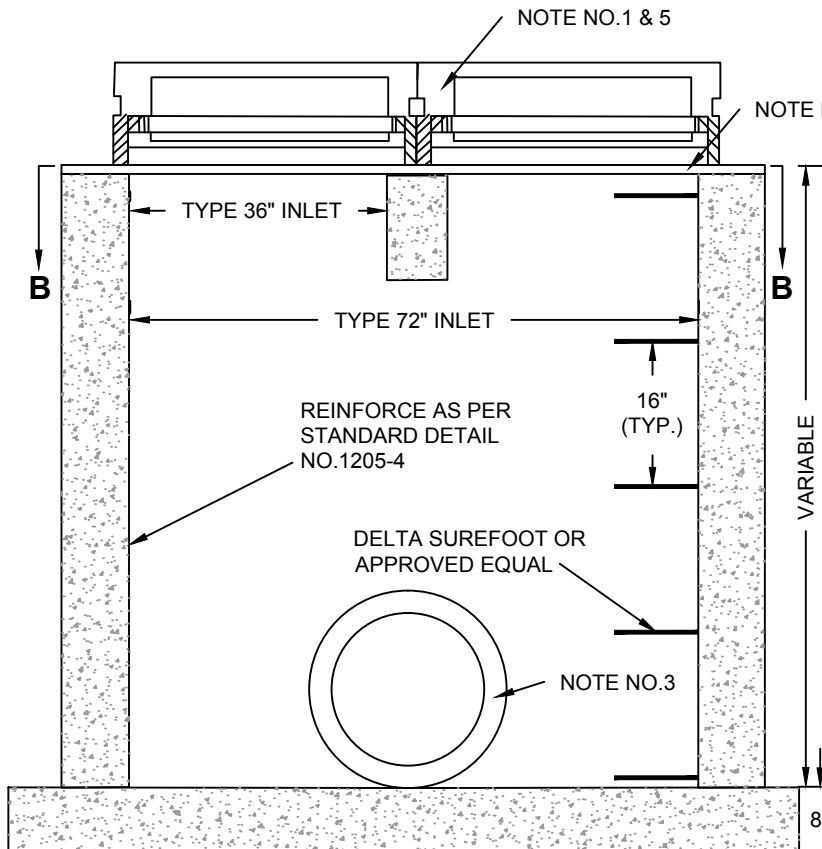
ROOF SLAB DETAIL



SECTION C-C



SECTION B-B



SECTION A-A

| | |
|---|----------|
| CITY OF WATFORD CITY, NORTH DAKOTA PUBLIC WORKS DEPARTMENT | |
| TYPE 36" AND TYPE 72" INLETS (SHEET 1 OF 2) | |
| APPROVED FOR PUBLICATION | DWG. NO. |
| City Engineer _____ | 1205-6 |
| Date _____ | |